



SALE CONGRESSI
CONGRESS ROOMS
SALLES DE CONFÉRENCE



790 CAMERE
 30 SALE CONGRESSUALI
 7 RISTORANTI
 6 PISCINE

CAMERE

- Classic Calanè
- Classic Valentino
- Superior Valentino

SALE CONGRESSUALI

- 1 Sala Ethra
- 2 Sala Fiocco
- 3 Sala Bolina
- 4 Sala Stampa
- 5 Sala Libeccio
- 6 Sala Grecale
- 7 Atryum
- 8 Teatro all'aperto
- 9 Coquì Rosso 1
- 10 Coquì Rosso 2
- 11 Coquì Azzurro
- 12 Coquì Arancio 1
- 13 Coquì Arancio 2
- 14 Coquì Avorio Inferiore
- 15 Coquì Avorio Superiore

- 16 Alborèa
- 17 Club House
- 18 Sala Clarke
- 19 Anfiteatro
- 20 Sala Club
- 21/26 Piramide 1/2/3/4/5/6
- 27 Sala Ambasz
- 28 Sala Panorama
- 29 Sala Kalidira
- 30 Lobby

RISTORANTI

- 1 Calanè
- 2 Piramidi
- 3 Alborèa
- 4 Kalidria
- 5 Scirò
- 6 Mediterraneo
- 7 Pizzeria Ethra

HOTEL

- 1 Calanè
- 2 Valentino
- 3 Alborèa
- 4 Kalidria

PISCINE

- 1 Mini Club
- 2 Calanè
- 3 Alborèa
- 4 Kalidria
- 5 Valentino
- 6 Ethra

SALE CONGRESSI - CONGRESS ROOMS

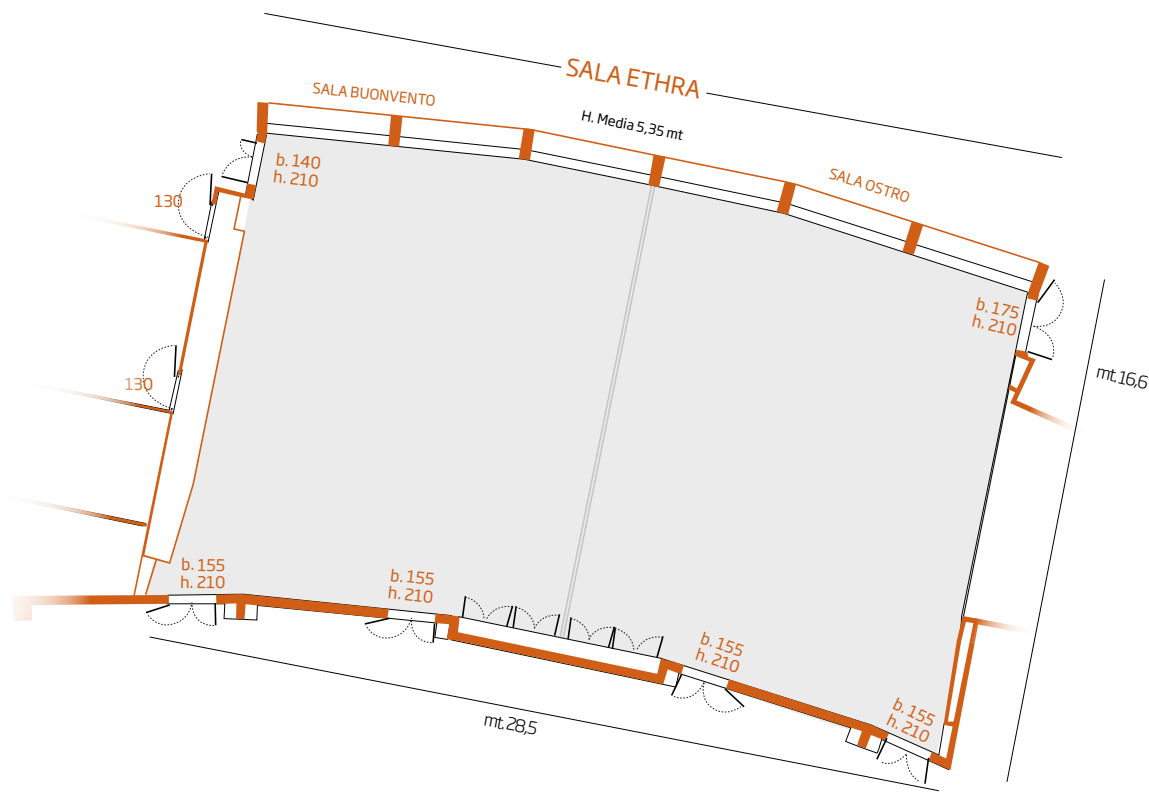
	SALA CONGRESSI	SUPERFICIE MQ	DIMENSIONI (Metri)	ALTEZZA (Metri)	ALLESTIMENTO / SET UP					LUCE NATURALE
	CONGRESS ROOM	SURFACE MQ	ROOM SIZE (Metres)	HEIGHT (Metres)	PLATEA THEATRE STYLE	CLASS ROOM	CABARET	FERRO DI CAVALLO U-SHAPE	TAVOLA ROTONDA BOARD ROOM	NATURAL DAYLIGHT
CALANÈ HOTEL	SALA ETHRA	500	28,50X16,60	5,35	600	300	250	100		X
	- BUONVENTO	250	16,60X14,20	5,35	250	100	100	40	40	X
	- OSTRO	250	16,60X14,20	5,35	250	100	100	40	40	X
	FIOCO	51	6,70X7,70	3,4	30	16	16	-	20	
	BOLINA	51	6,70X7,70	3,4	30	16	16	-	20	
	STAMPA	23	6,80X3,80	3,4	15	-	-	-	16	
	LIBECCIO	35	8,60X4,30	3,4	30	16	-	20	20	
	GRECALE	70	10,00X7,00	3,4	60	30	30	26	26	
	ATRYUM	400	-	6,3	160	80	80	-	-	X
	TEATRO (All'aperto/Outdoor)		-	Open	400	-	-	-	-	
ALBORÈA HOTEL	Coqui ROSSO 1	183	14,40X12,70	4,3	100	48	35	36	36	X
	Coqui ROSSO 2	141	12,50X11,30	4,3	70	32	28	24	24	X
	Coqui AZZURRO	160	15,50X10,30	4,3	70	20	20	32	32	X
	Coqui ARANCIO 1	125	13,30X9,40	4,3	70	36	24	32	32	X
	Coqui ARANCIO 2	200	15,20X13,10	4,3	120	30	21	36	36	X
	Coqui AVORIO INFERIORE	174	18,50X9,20	3,9	70	30	20	16	16	X
	Coqui AVORIO SUPERIORE	174	18,50X9,20	3,9	60	30	28	32	32	X
	ALBORÈA	10,30	2,70X3,50	2,70	-	-	-	-	6	X
CLUB HOUSE	560	-	6,95	300	200	150	50	-	X	

	SALA CONGRESSI	SUPERFICIE MQ	DIMENSIONI (Metri)	ALTEZZA (Metri)	ALLESTIMENTO / SET UP					LUCE NATURALE
	CONGRESS ROOM	SURFACE MQ	ROOM SIZE (Metres)	HEIGHT (Metres)	PLATEA THEATRE STYLE	CLASS ROOM	CABARET	FERRO DI CAVALLO U-SHAPE	TAVOLA ROTONDA BOARD ROOM	NATURAL DAYLIGHT
VALENTINO HOTEL	CLARKE	180	-	4	150	-	-	-	-	X
	ANFITEATRO (All'aperto/Outdoor)	-	-	Open	1000	-	-	-	-	
	SALA CLUB	150	15,80X9,70	2,9	100	30	35	-	-	X
	PIRAMIDI	1000	44,80X28,50	3,5/7,3	1000	500	-	-	-	X
	PIRAMIDI 1	150	12,50X12,50	3,5/7,3	150	70	40	32	32	X
	PIRAMIDI 2	200	16,15X12,50	3,5/7,3	200	120	70	40	40	X
	PIRAMIDI 3	200	16,15X12,50	3,5/7,3	200	120	70	40	40	X
	PIRAMIDI 4	270	16,15X16,50	3,5/7,3	300	200	120	40	40	X
	PIRAMIDI 5	200	16,15X12,50	3,5/7,3	200	120	70	40	40	X
	PIRAMIDI 6	150	12,50X12,50	3,5/7,3	200	70	70	32	32	X
KALIDRIA HOTEL	AMBASZ	230	21,80X7,70	3,7	130	60	60	50	-	X
	- GIARDINO	145	7,60X15,80	3,7	70	30	35	30	-	X
	- LIBRARY	85	9,60X8,90	3,1	60	30	30	22	-	
	PANORAMA	84	14,00X6,00	3,7	45	20	-	24	24	X
	KALIDRIA	11	4,00X2,75	2,70	-	-	-	-	6	
	LOBBY	25	6,60X6,00	2,70	10	4	-	-	-	

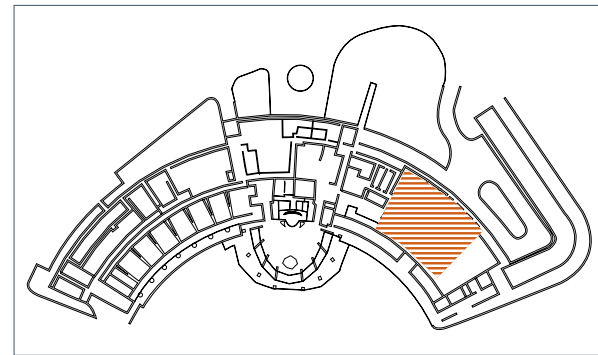
SALA ETHRA (Sala Buonvento + Sala Ostro)

Metri quadri superficie = **500 mq**
Altezza Media = **5,35 mt**

Platea = **600**
Classroom = **300**
Cabaret = **250**
Ferro di Cavallo = **100**



Calanè Hotel

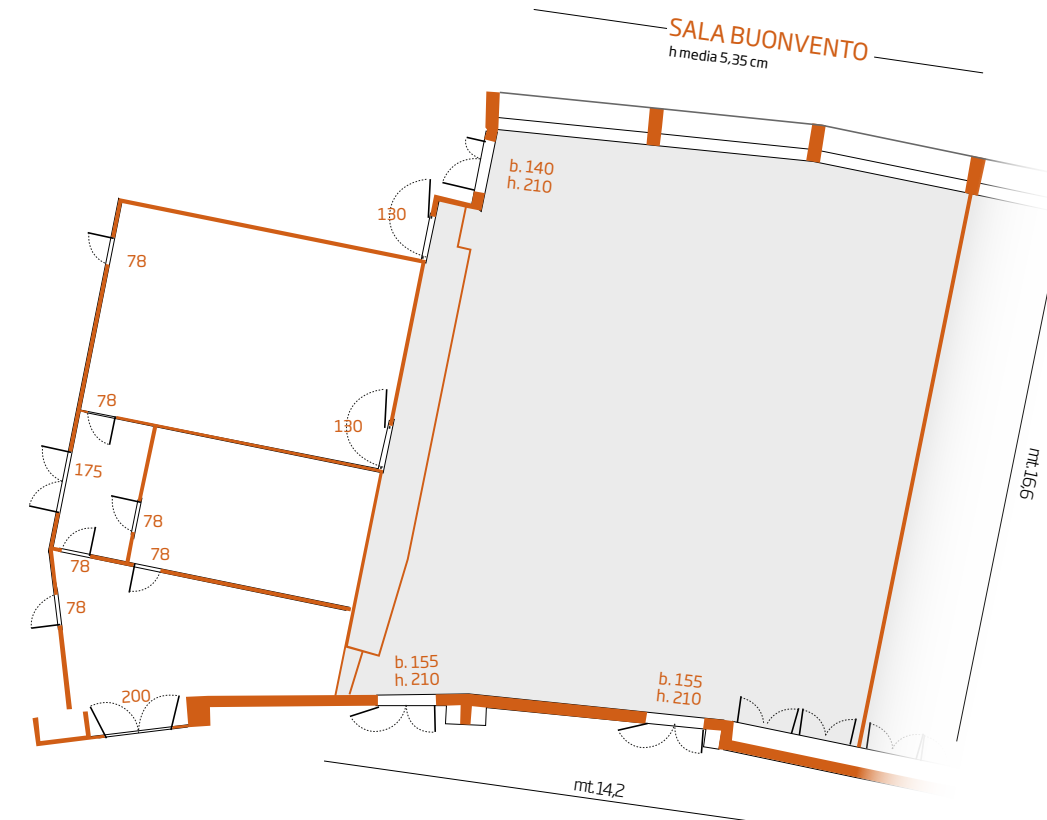


Sala Ethra | 2° piano

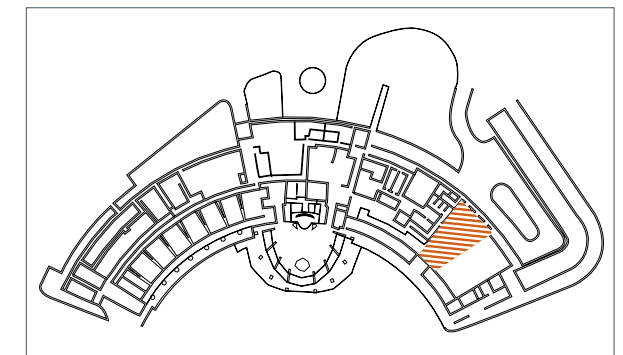
SALA BUONVENTO

Metri quadri superficie = **250 mq**
Altezza media = **5,35 mt**

Platea = **250**
Classroom = **100**
Cabaret = **100**
Ferro di Cavallo = **40**
Tavola Rotonda = **40**



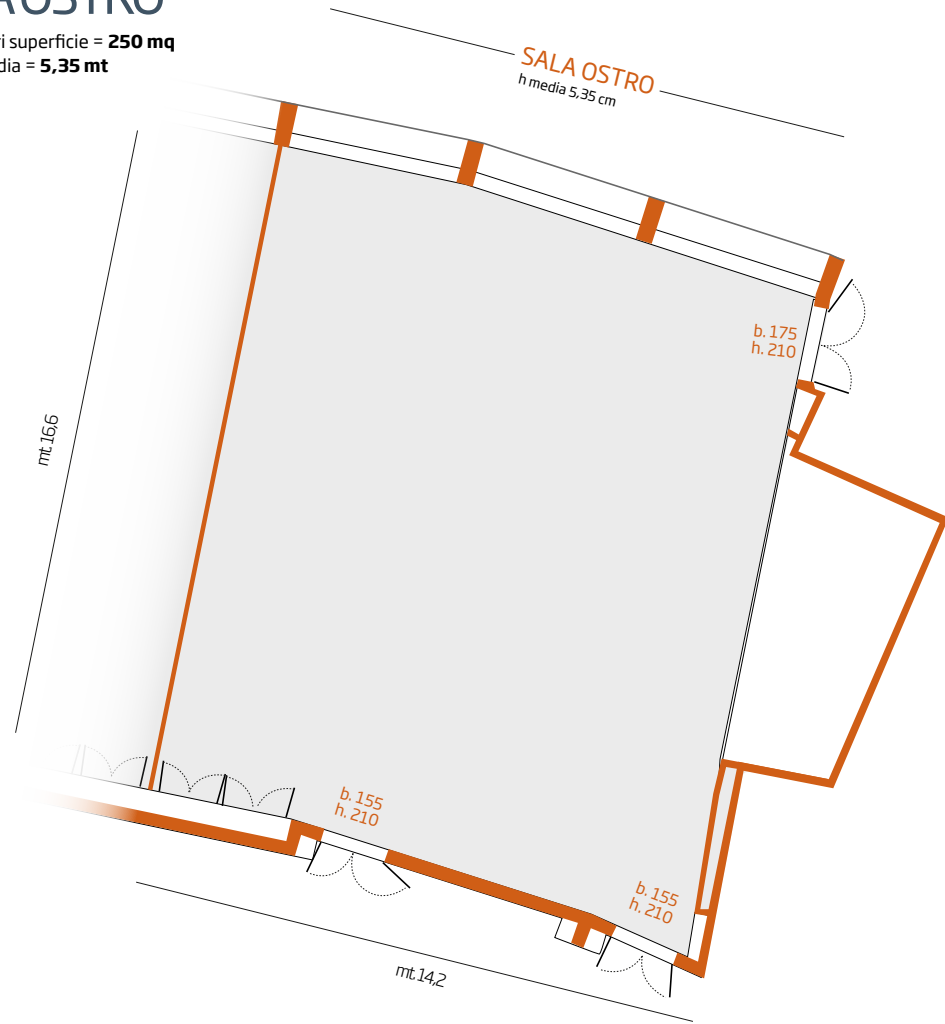
Calanè Hotel



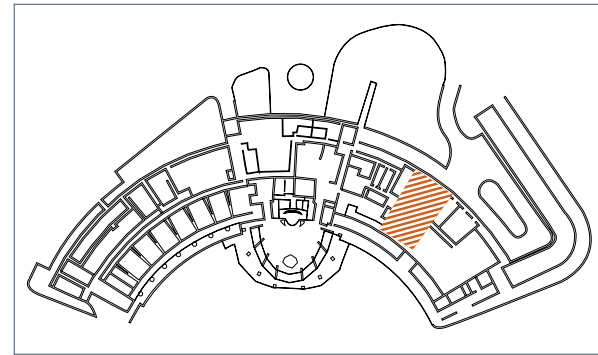
Sala Buonvento | 2° piano

SALA OSTRO

Metri quadri superficie = **250 mq**
Altezza media = **5,35 mt**



Calanè Hotel

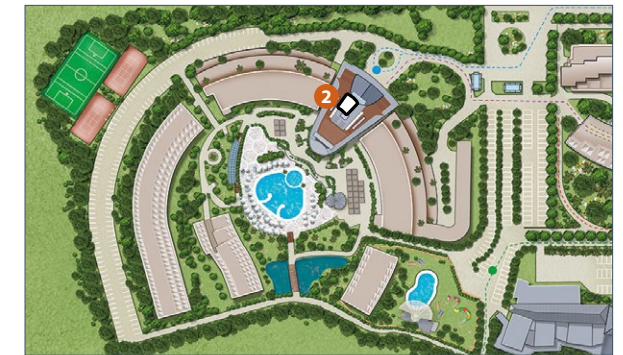
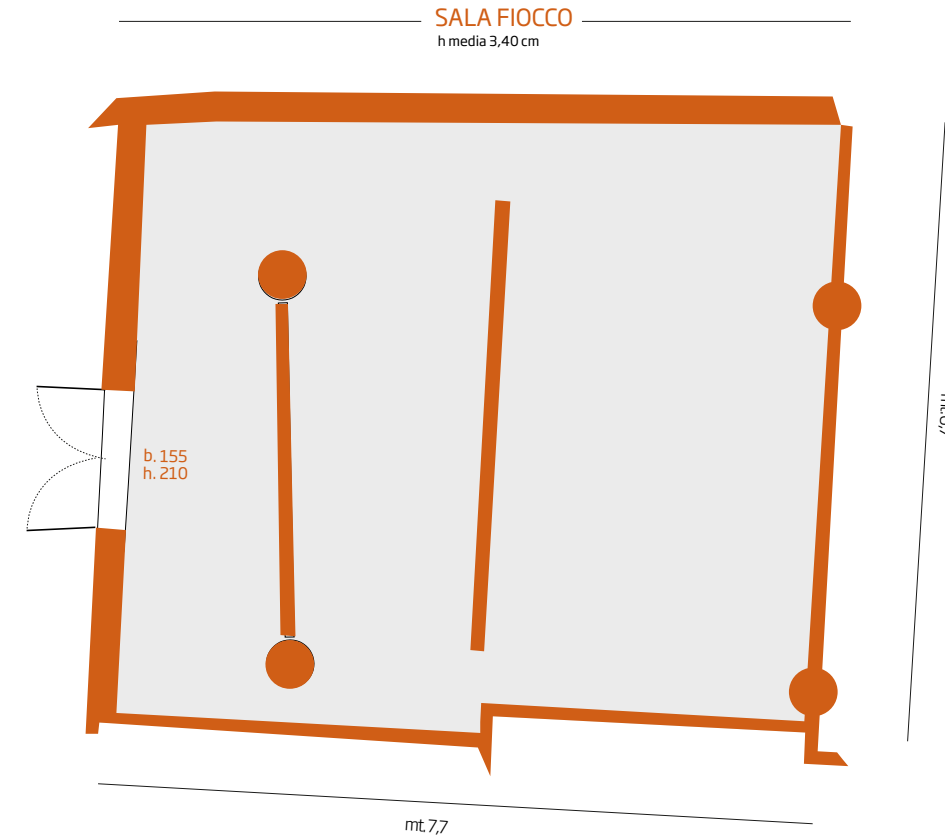


Sala Ostro | 2° piano

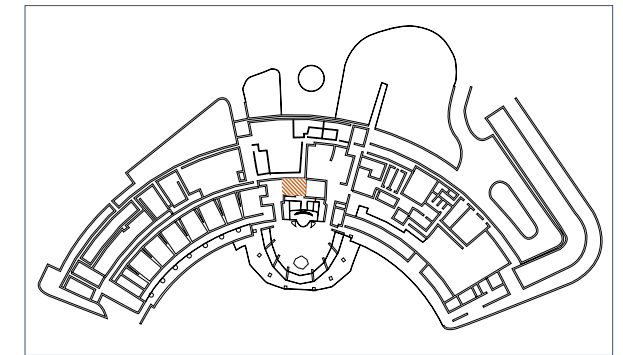
Platea = **250**
Classroom = **100**
Cabaret = **100**
Ferro di Cavallo = **40**
Tavola Rotonda = **40**

SALA FIOCCO

Metri quadri superficie = **51 mq**
Altezza media = **3,40 mt**



Calanè Hotel



Sala Fiocco | piano terra

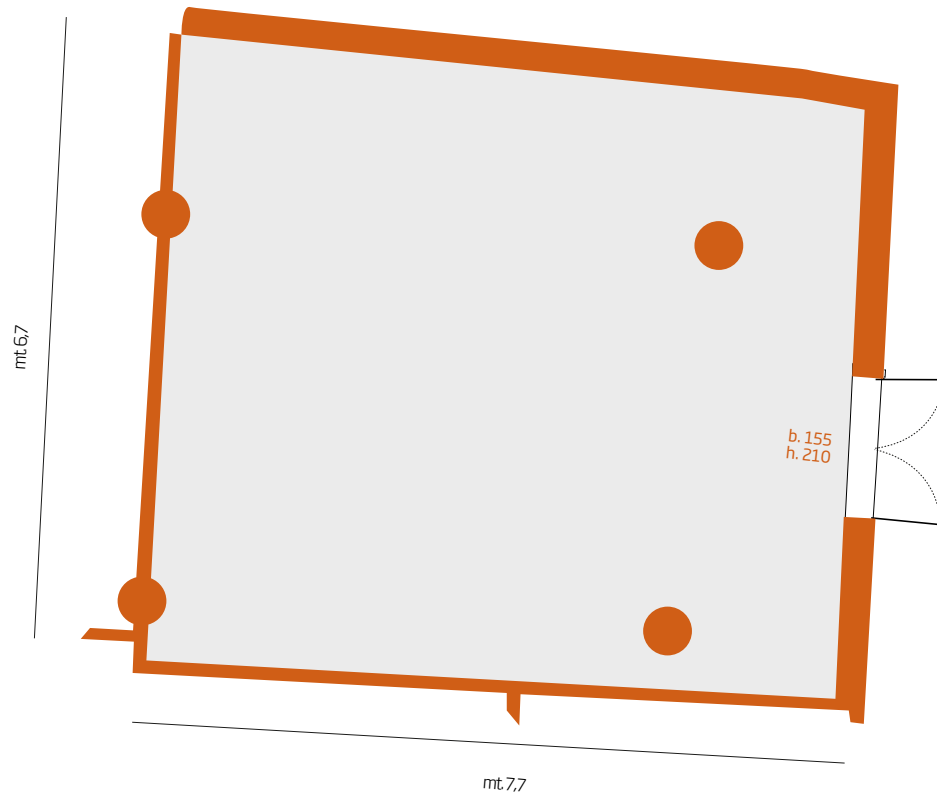
Platea = **30**
Classroom = **16**
Cabaret = **16**
Tavola Rotonda = **20**

SALA BOLINA

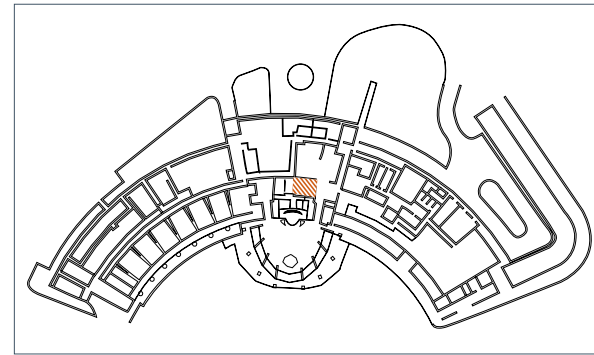
Metri quadri superficie = **51 mq**
Altezza media = **3,40 mt**

Platea = **30**
Classroom = **16**
Cabaret = **16**
Tavola Rotonda = **20**

SALA BOLINA
h media 3,40 cm



Calanè Hotel



Sala Bolina | piano terra

SALA GRECALE, SALA LIBECCIO, SALA STAMPA

Metri quadri superficie
SALA GRECALE = **70 mq**
SALA LIBECCIO = **35 mq**
SALA STAMPA = **23 mq**
Altezza media = **3,40 mt**

Sala Grecale
Platea = **60**
Classroom = **30**
Cabaret = **30**
Ferro di Cavallo = **26**
Tavola Rotonda = **26**

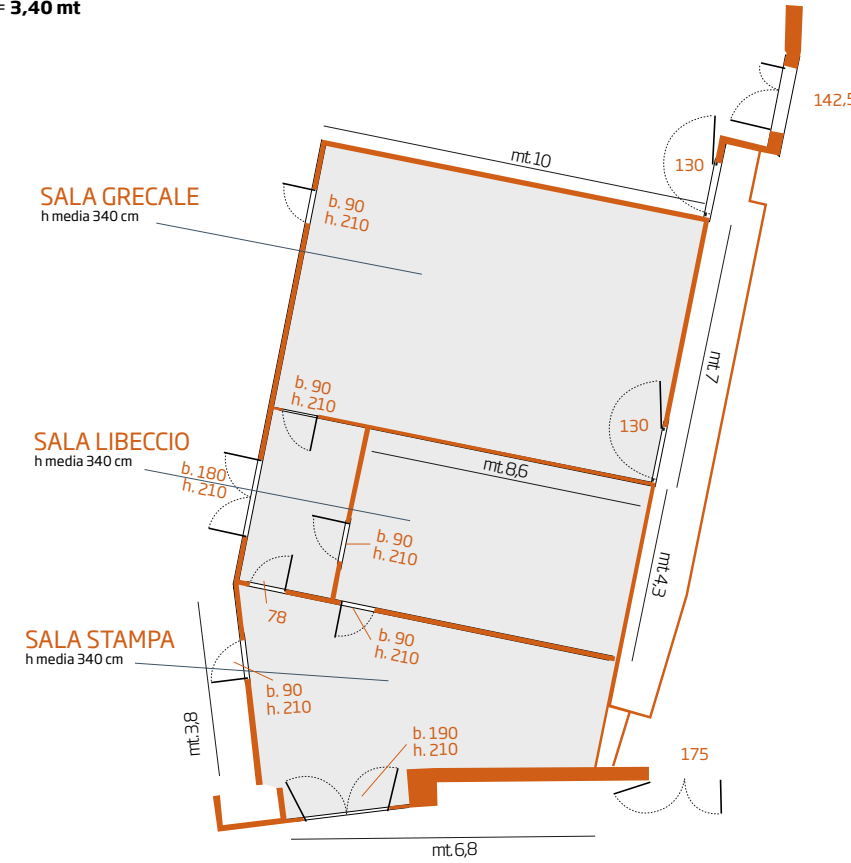
Sala Libeccio
Platea = **30**
Classroom = **16**
Ferro di Cavallo = **20**
Tavola Rotonda = **20**

Sala Stampa
Platea = **15**
Tavola Rotonda = **16**

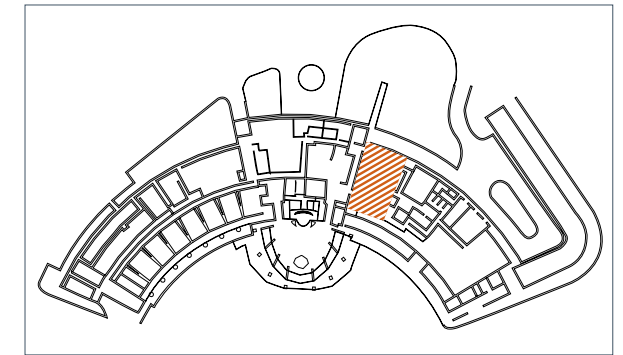
SALA GRECALE
h media 340 cm

SALA LIBECCIO
h media 340 cm

SALA STAMPA
h media 340 cm



Calanè Hotel

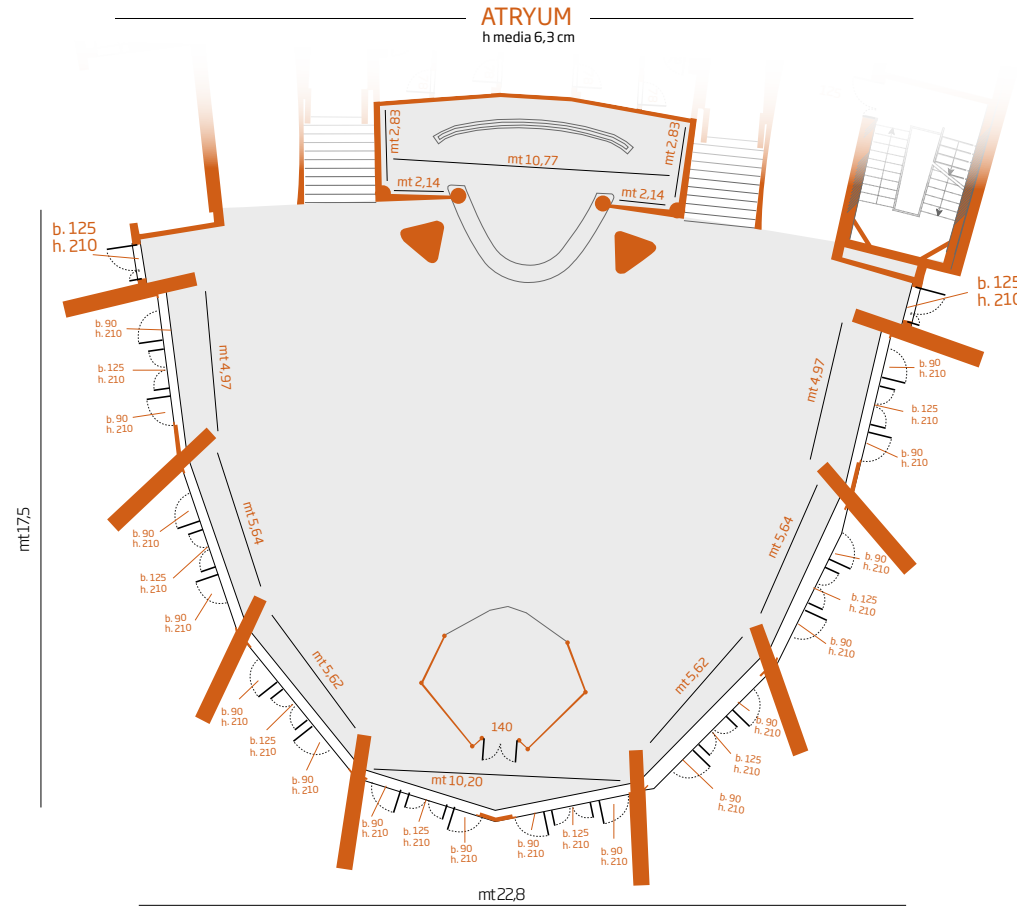


Sala Grecale, Libeccio, Stampa | 2° piano

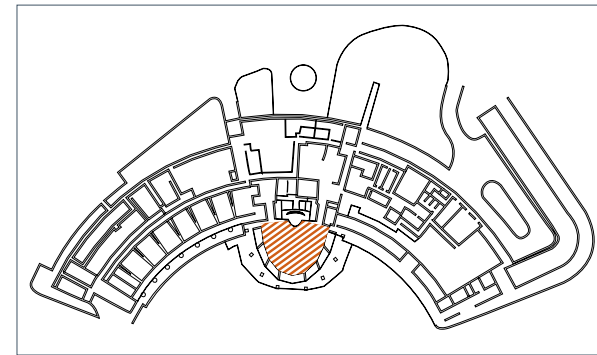
ATRYUM

Metri quadri superficie = **400 mq**
Altezza media = **6,3 mt**

Platea = **160**
Classroom = **80**
Cabaret = **80**



Calanè Hotel

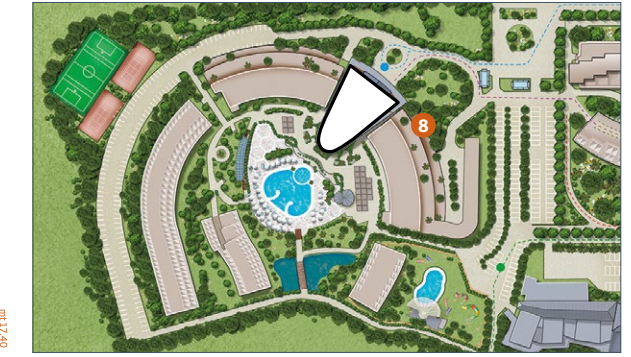
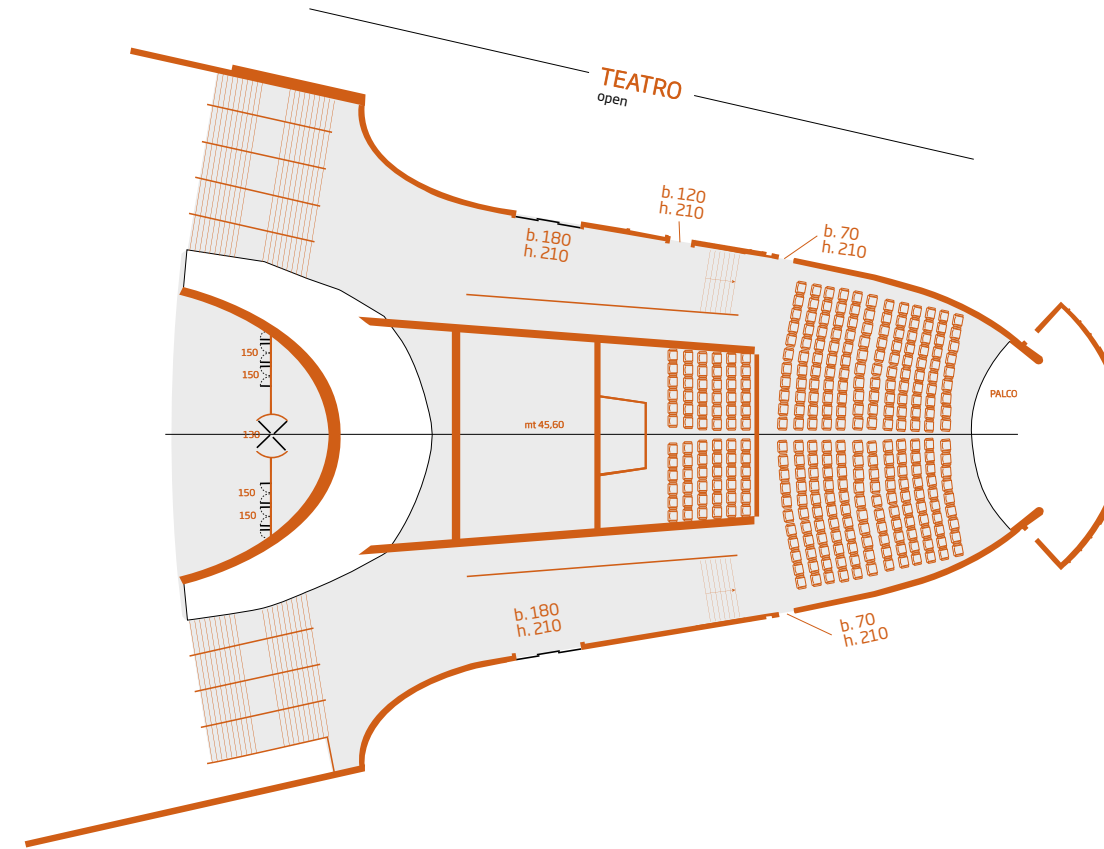


Atrium | piano terra

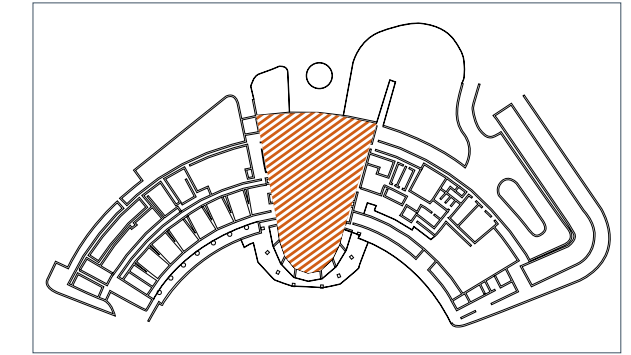
TEATRO

Metri quadri superficie = **OPEN**
Altezza media = **OPEN**

Platea = **400**



Calanè Hotel



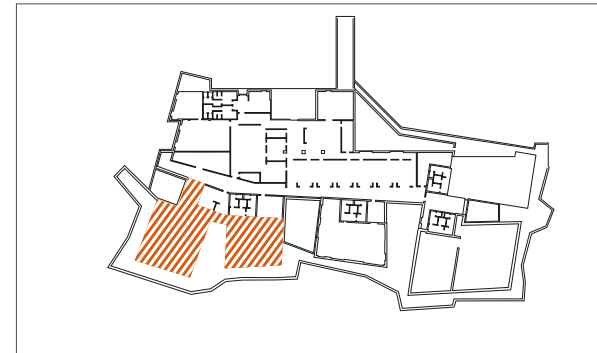
Teatro | 2° piano

COQUÌ ROSSO 1 e 2

Metri quadri superficie
COQUÌ ROSSO 1 = **183 mq**
COQUÌ ROSSO 2 = **141 mq**
Altezza media = **4,3 mt**



Alborèa Hotel

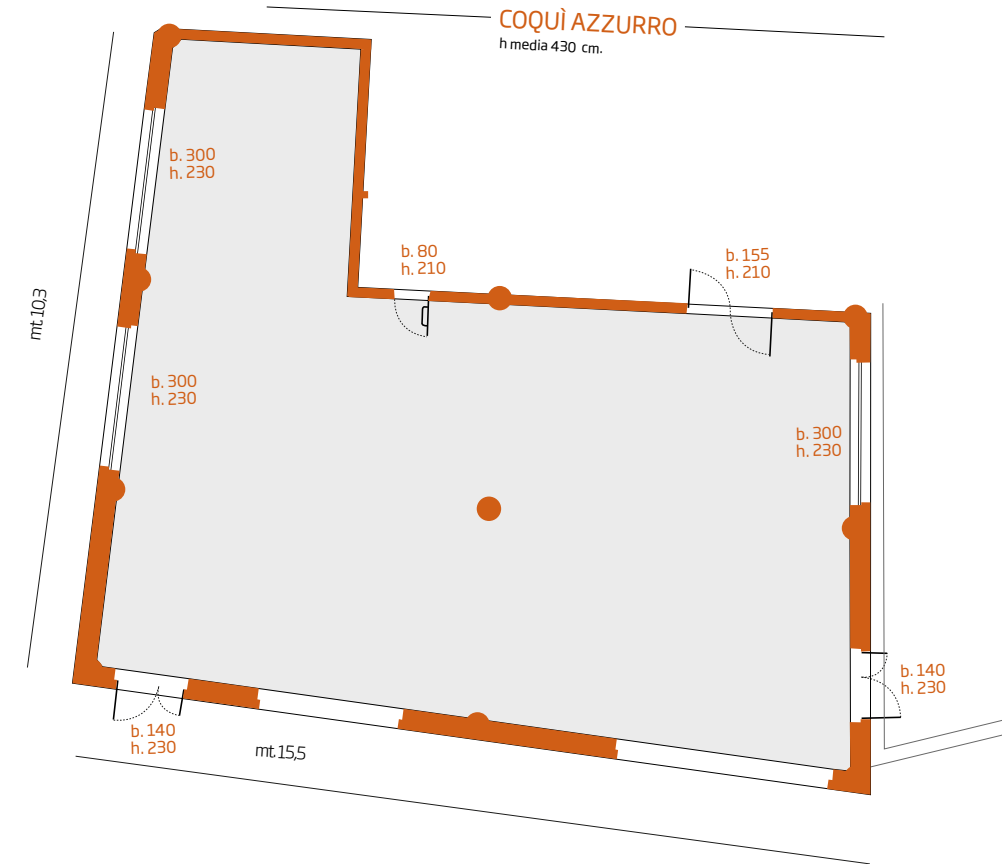


Coquì Rosso 1 e 2 | piano terra

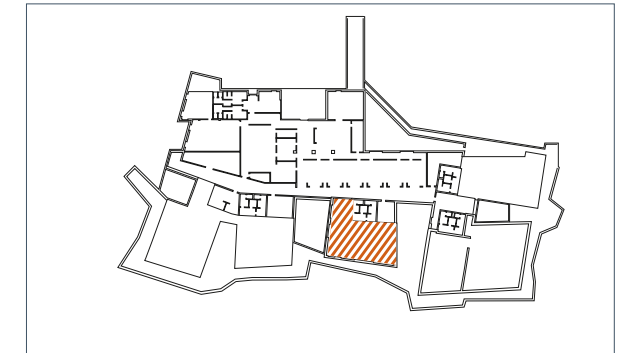
Coquì Rosso 1	Coquì Rosso 2
Platea = 100	Platea = 70
Classroom = 48	Classroom = 32
Cabaret = 35	Cabaret = 28
Ferro di Cavallo = 36	Ferro di Cavallo = 24
Tavola Rotonda = 36	Tavola Rotonda = 24

COQUÌ AZZURRO

Metri quadri superficie = **160 mq**
Altezza media = **4,3 mt**



Alborèa Hotel

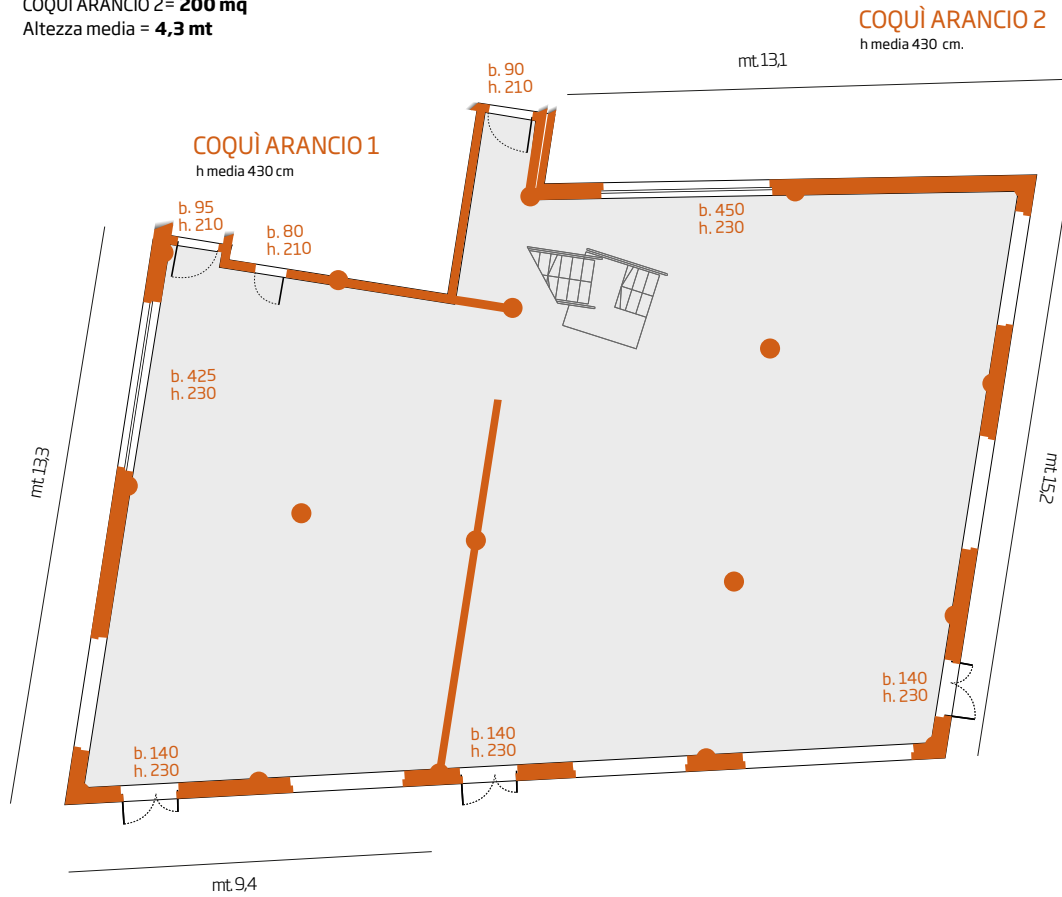


Coquì Azzurro | piano terra

Platea = 70
Classroom = 20
Cabaret = 20
Ferro di cavallo = 32
Tavola rotonda = 32

COQUÌ ARANCIO 1 e 2

Metri quadri superficie
COQUÌ ARANCIO 1 = **125 mq**
COQUÌ ARANCIO 2 = **200 mq**
Altezza media = **4,3 mt**



Alborèa Hotel

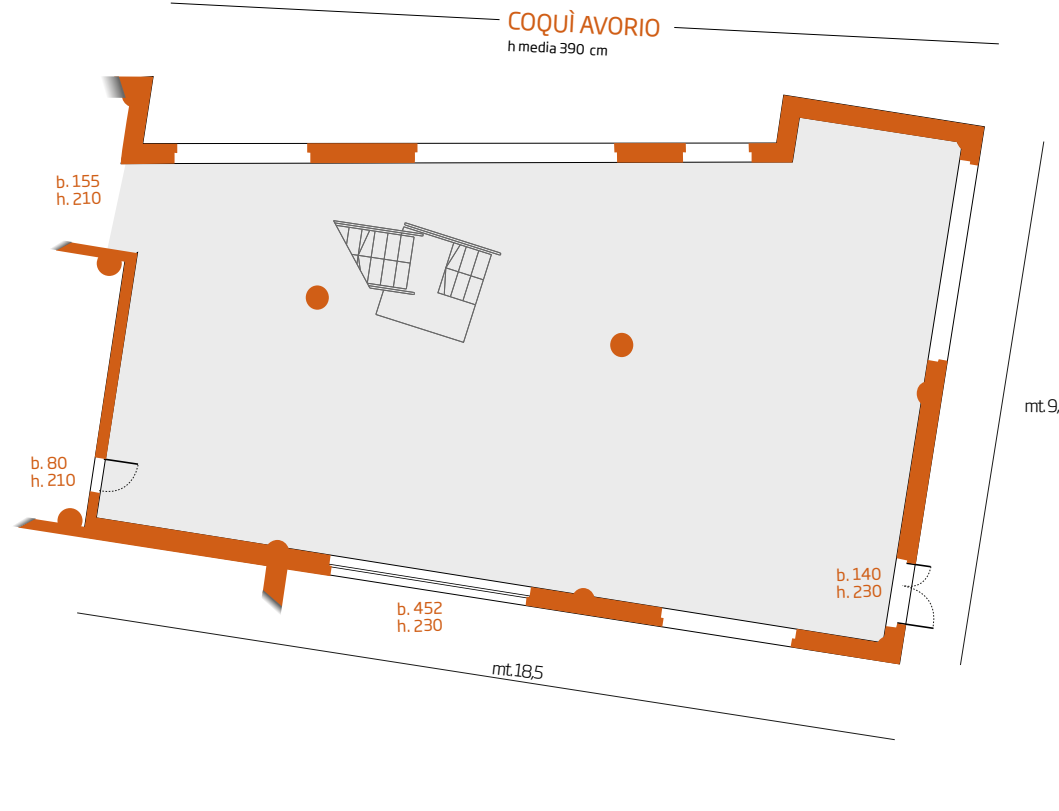


Coquì Arancio 1 e 2 | piano terra

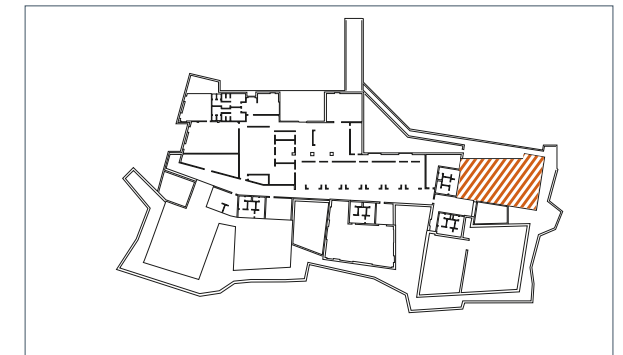
Coquì Arancio 1	Coquì Arancio 2
Platea = 70	Platea = 120
Classroom = 36	Classroom = 30
Cabaret = 24	Cabaret = 21
Ferro di Cavallo = 32	Ferro di Cavallo = 36
Tavola Rotonda = 32	Tavola Rotonda = 36

COQUÌ AVORIO inferiore

Metri quadri superficie = **174 mq**
Altezza media = **3,9 mt**



Alborèa Hotel

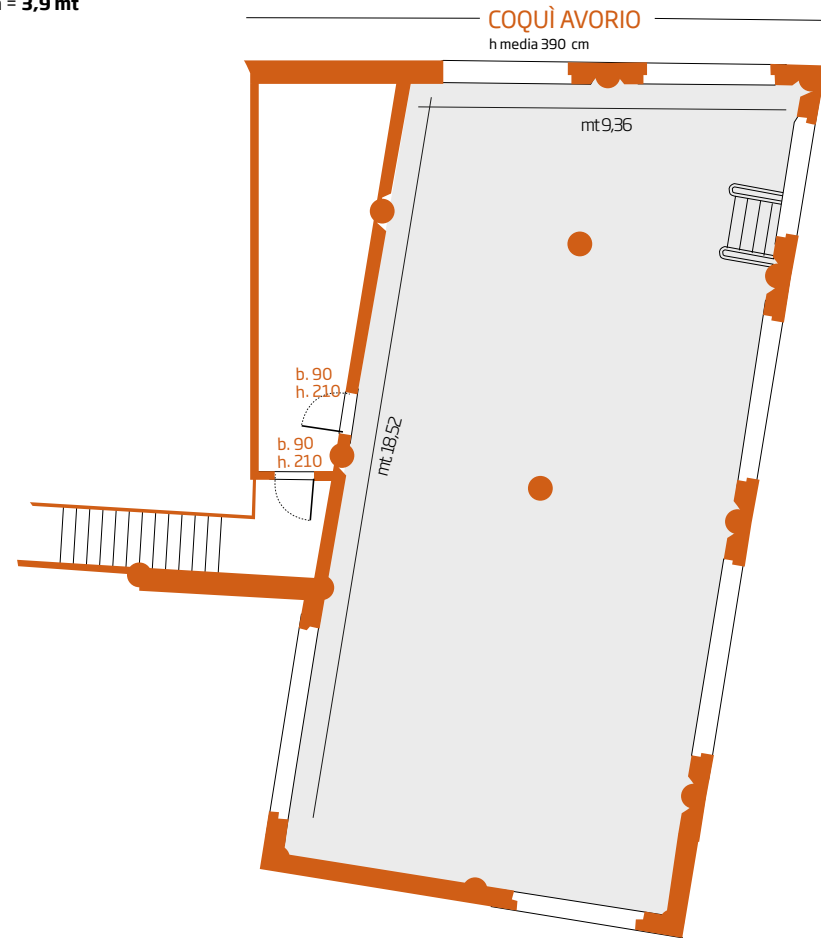


Coquì Avorio Inferiore | 1° piano

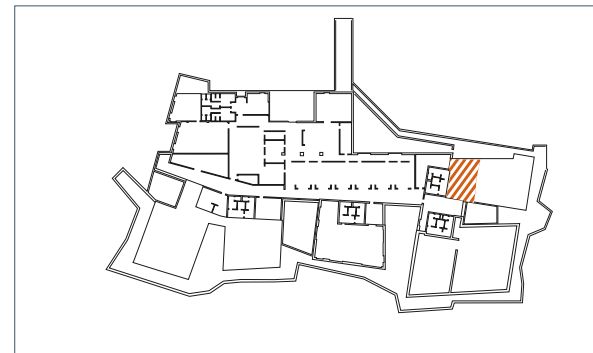
Platea = 70
Classroom = 30
Cabaret = 20
Ferro di cavallo = 16
Tavola rotonda = 16

COQUÌ AVORIO superiore

Metri quadri superficie = **174 mq**
Altezza media = **3,9 mt**



Alborèa Hotel

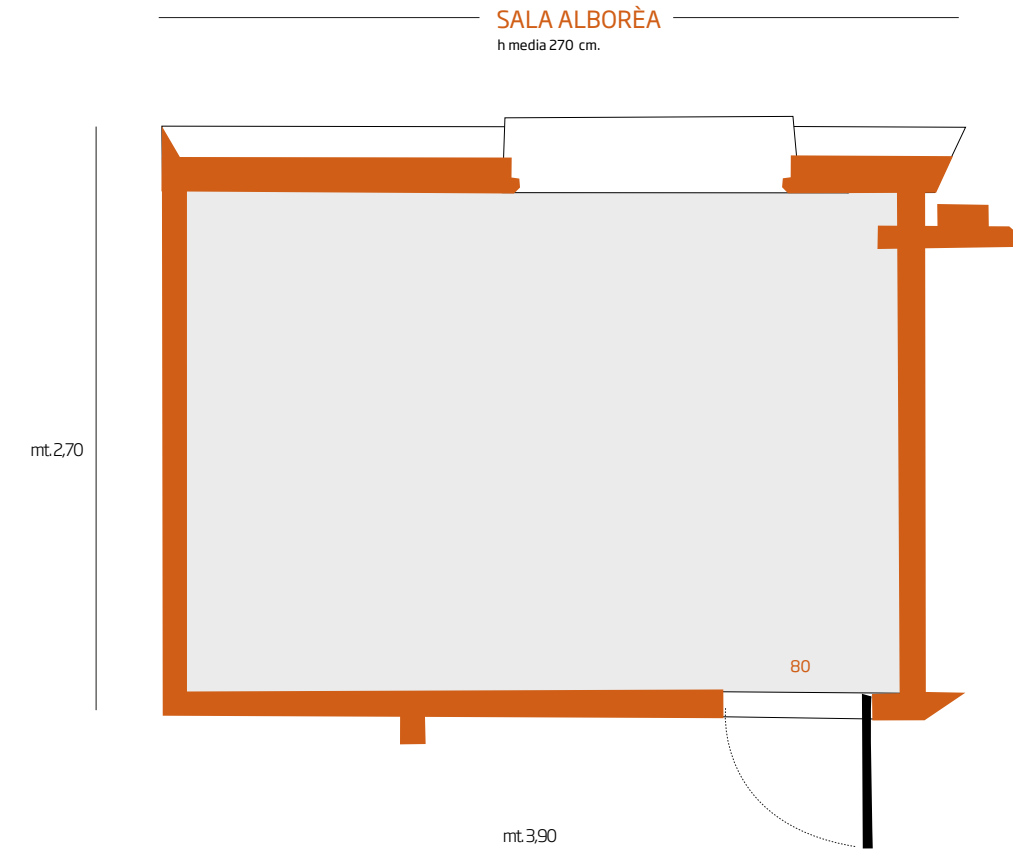


Coquì Avorio Superiore | 1° piano

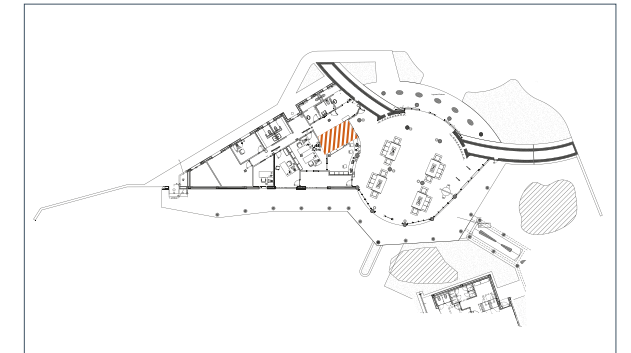
Platea = **60**
Classroom = **30**
Cabaret = **28**
Ferro di cavallo = **32**
Tavola rotonda = **32**

SALA ALBORÈA

Metri quadri superficie = **10,30 mq**
Altezza = **2,7 mt**



Alborèa Hotel

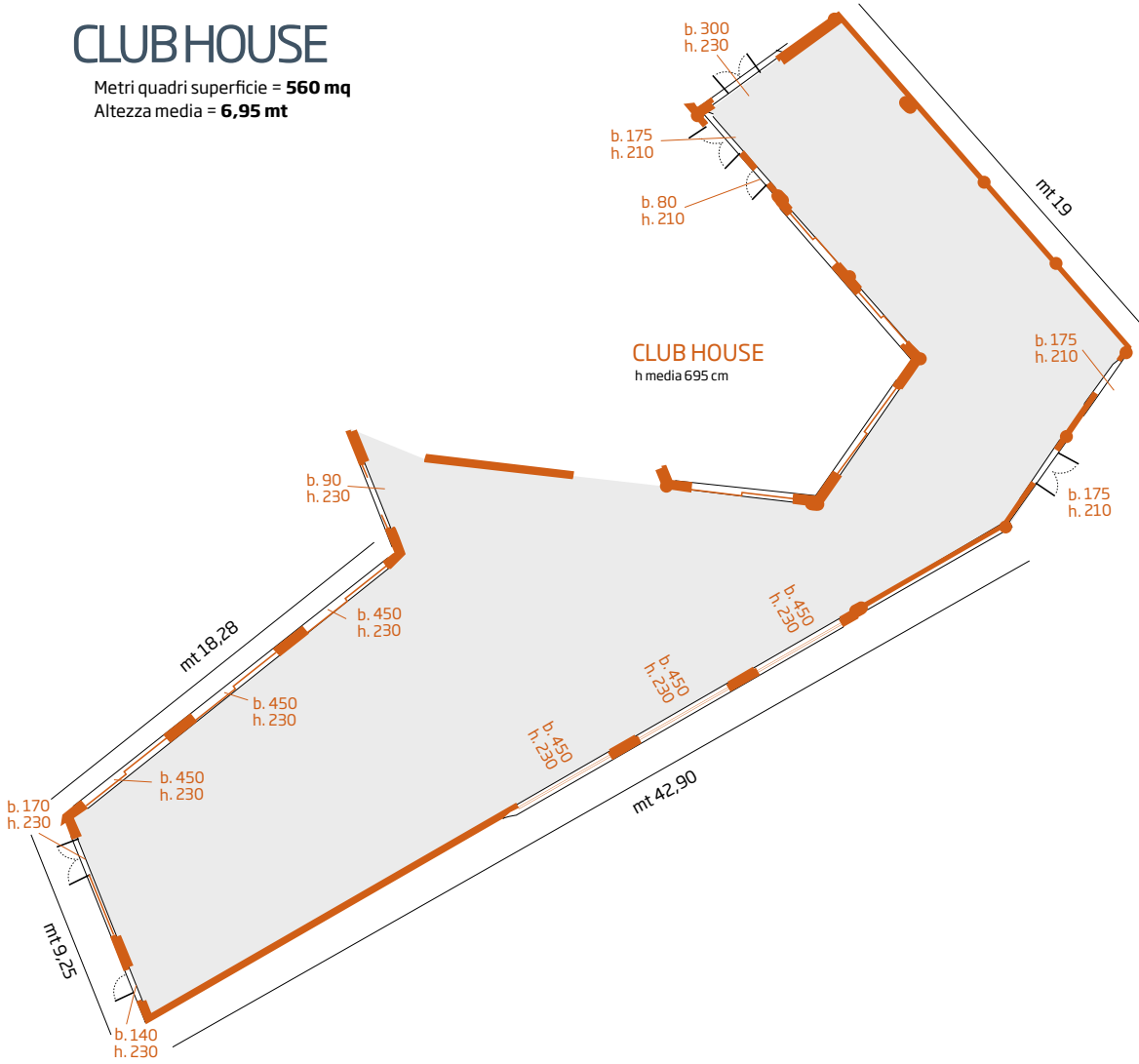


Sala Alborèa | piano terra

Tavola rotonda = **6**

CLUBHOUSE

Metri quadri superficie = **560 mq**
Altezza media = **6,95 mt**



Alborèa Hotel

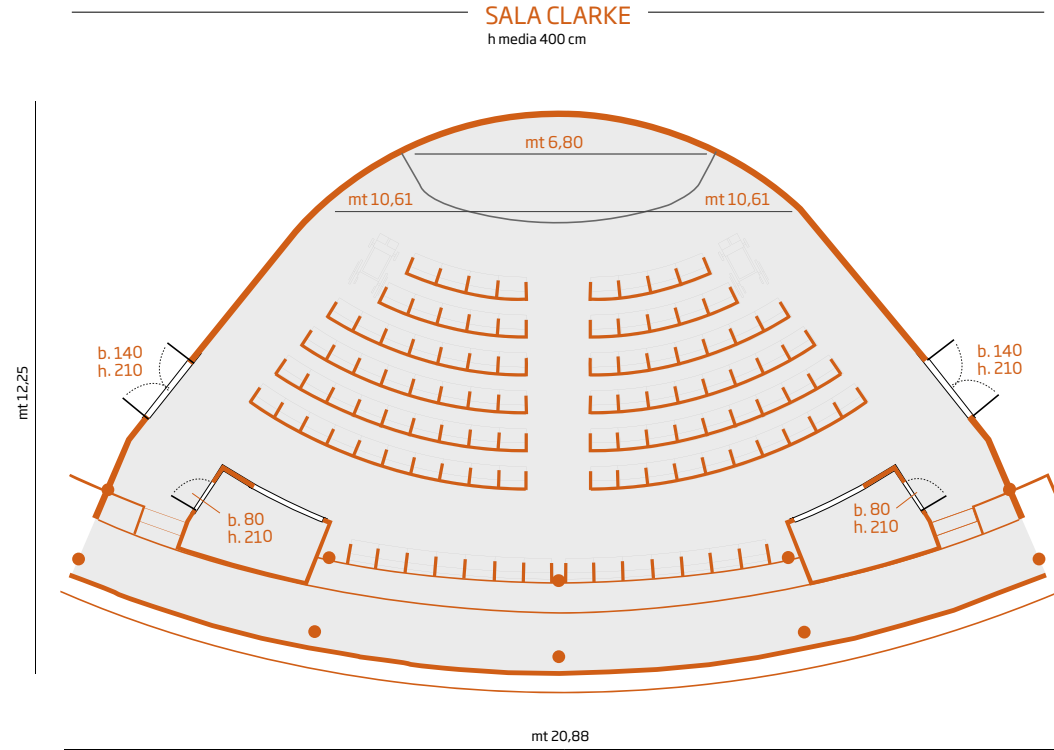
Platea = **300**
Classroom = **200**
Cabaret = **150**
Ferro di Cavallo = **50**



Club House | piano terra

SALA CLARKE

Metri quadri superficie = **180 mq**
Altezza media = **4 mt**

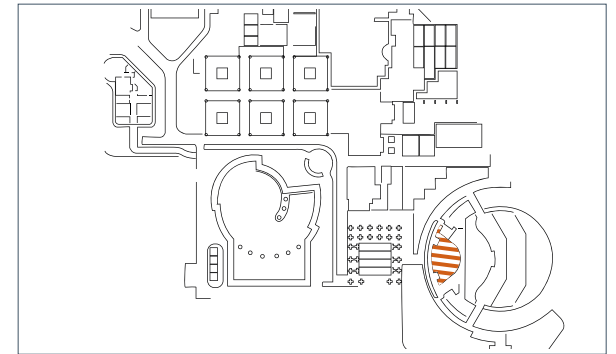


SCALA 1:100

Platea = **150**



Valentino Hotel



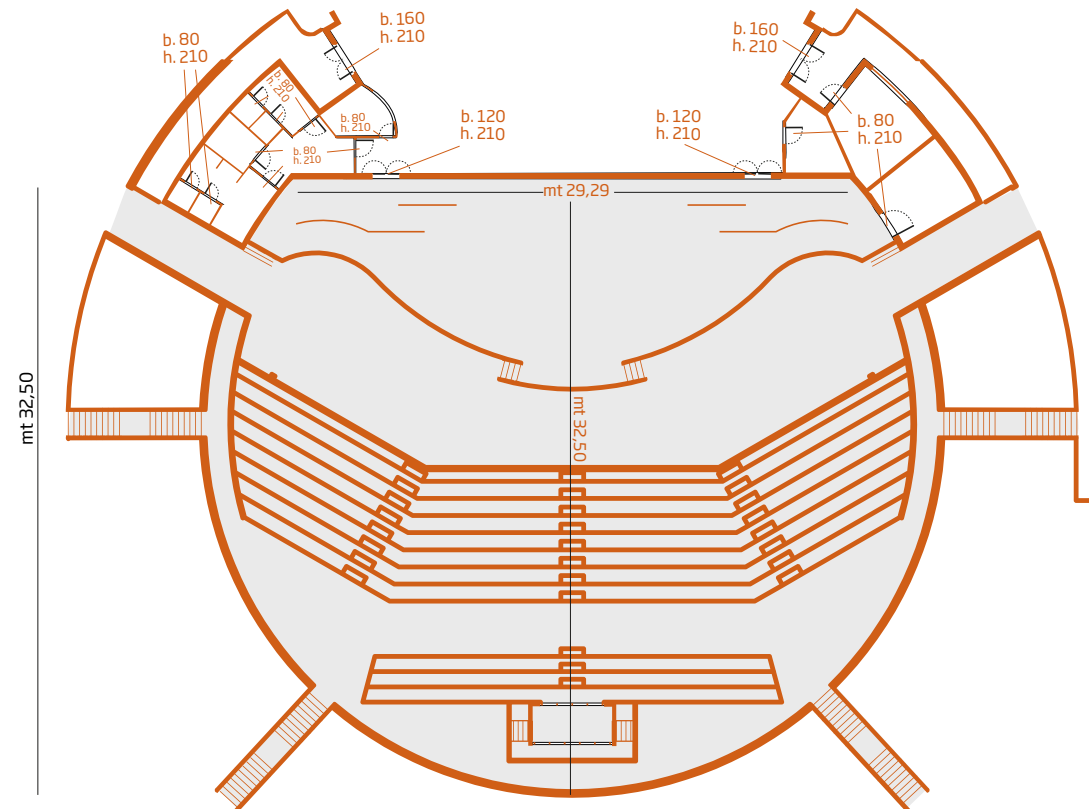
Sala Clarke | piano rialzato

ANFITEATRO

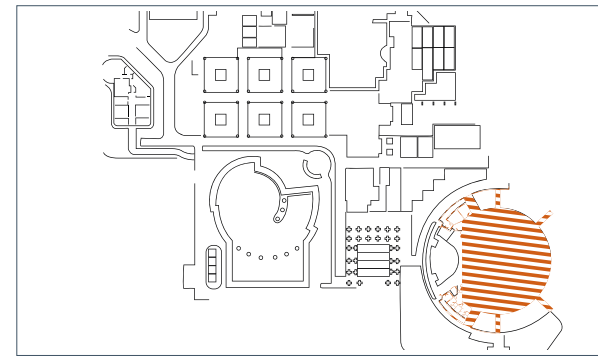
Altezza media = **Open**

Platea = **1000**

ANFITEATRO



Valentino Hotel



Anfiteatro | piano terra

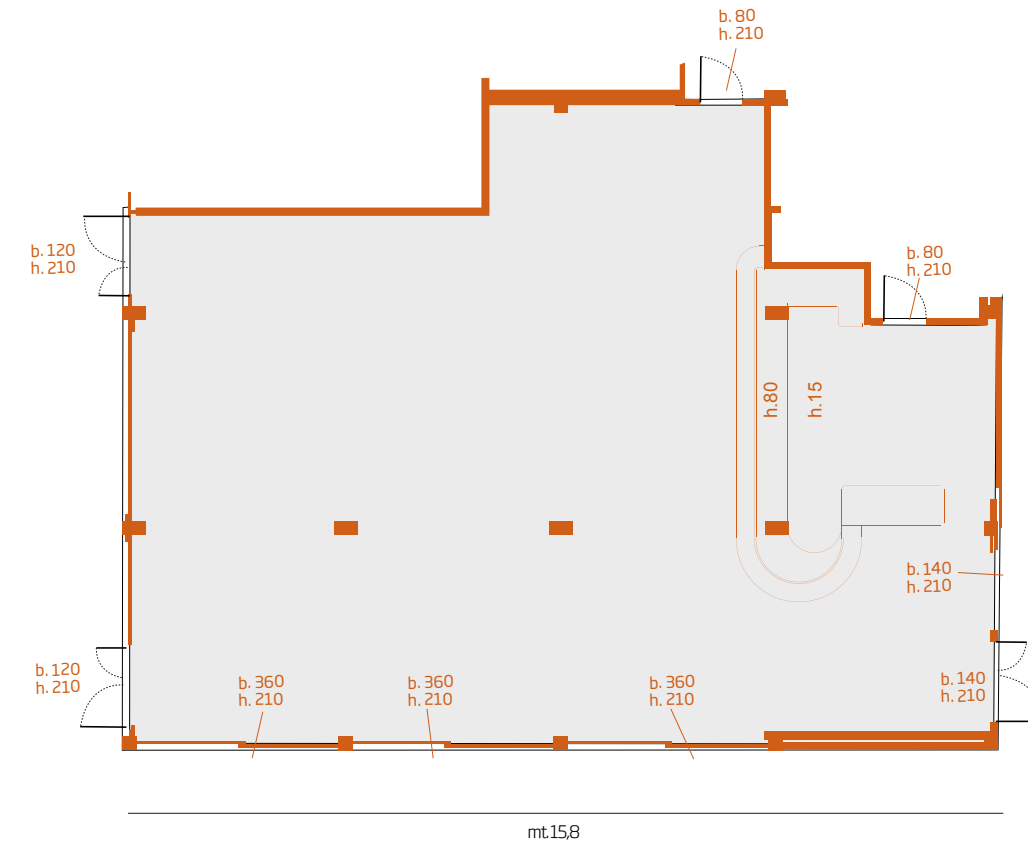
SALA CLUB

Metri quadri superficie = **150 mq**
Altezza media = **2,90 mt**

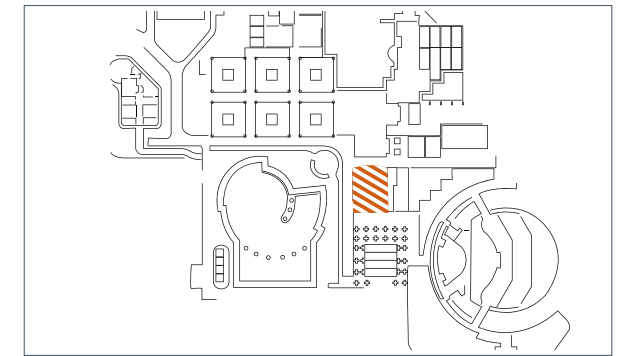
Platea = **100**
Classroom = **30**
Cabaret = **35**

SALA CLUB

h media 290 cm



Valentino Hotel

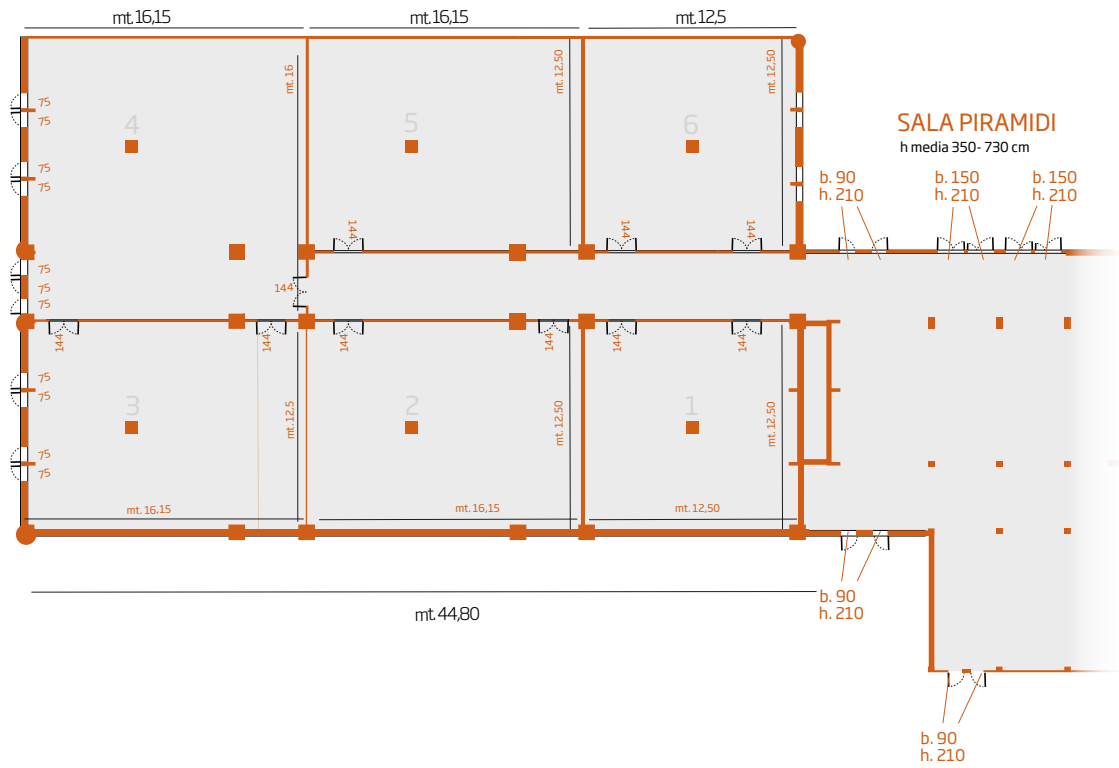


Sala Club | piano terra

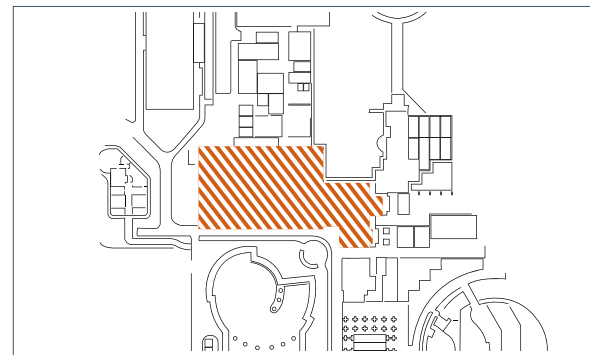
SALA PIRAMIDI

Metri quadri superficie = **1000 mq**
Altezza media = **3,50 - 7,30 mt**

Platea = **1000**
Classroom = **500**



Valentino Hotel



Sala Piramidi | piano terra

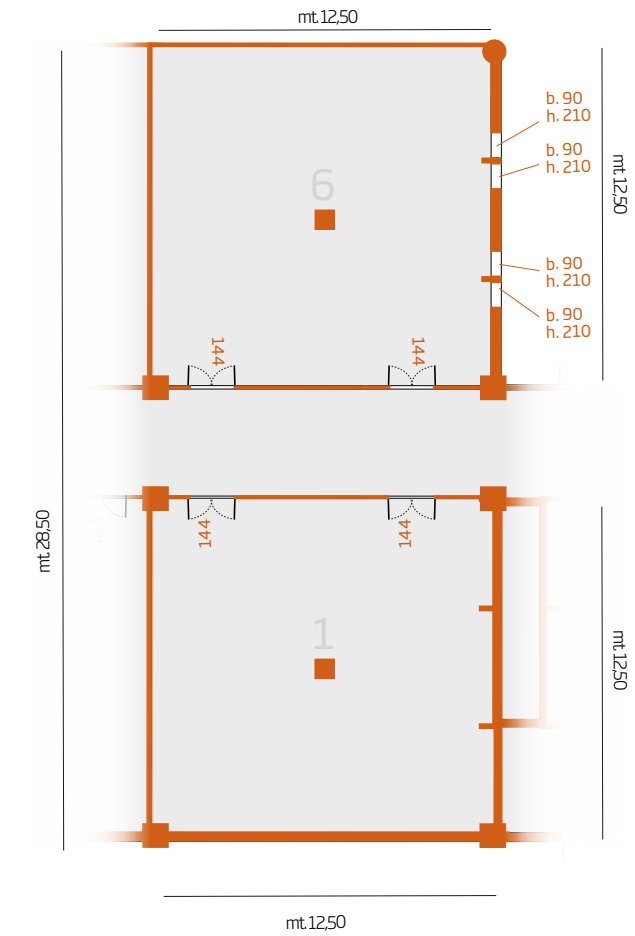
SALA PIRAMIDI 1-6

Metri quadri superficie = **356,25 mq**
Altezza media = **3,50 - 7,30 mt**

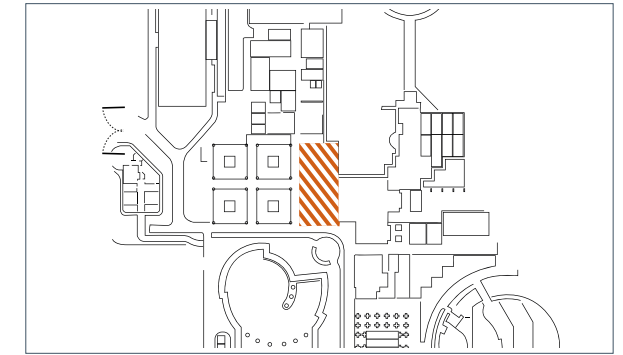
SALA PIRAMIDI 1-6
h media 350- 730 cm

SALA PIRAMIDI - sala 1
Platea = **150**
Classroom = **70**
Cabaret = **40**
Ferro di Cavallo = **32**
Tavola Rotonda = **32**

SALA PIRAMIDI - sala 6
Platea = **200**
Classroom = **70**
Cabaret = **70**
Ferro di Cavallo = **32**
Tavola Rotonda = **32**



Valentino Hotel

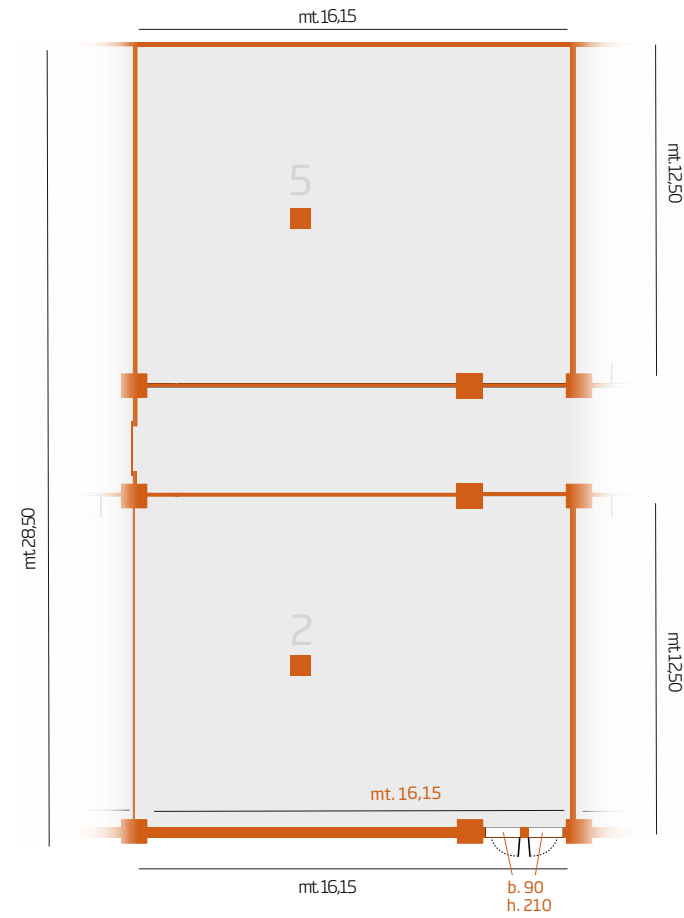


Sala Piramidi 1-6 | piano terra

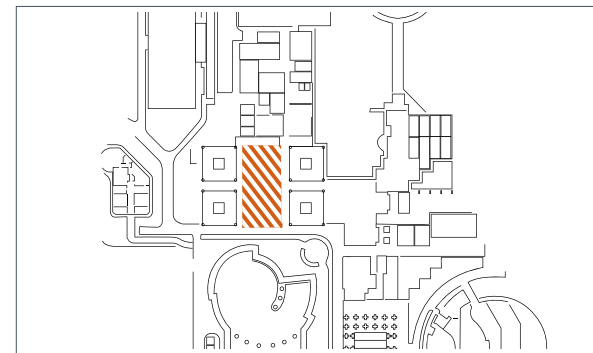
SALA PIRAMIDI 2-5

Metri quadri superficie = **400 mq**
Altezza media = **3,50 - 7,30 mt**

SALA PIRAMIDI 2-5
h media 350- 730 cm



Valentino Hotel



Sala Piramidi 2-5 | piano terra

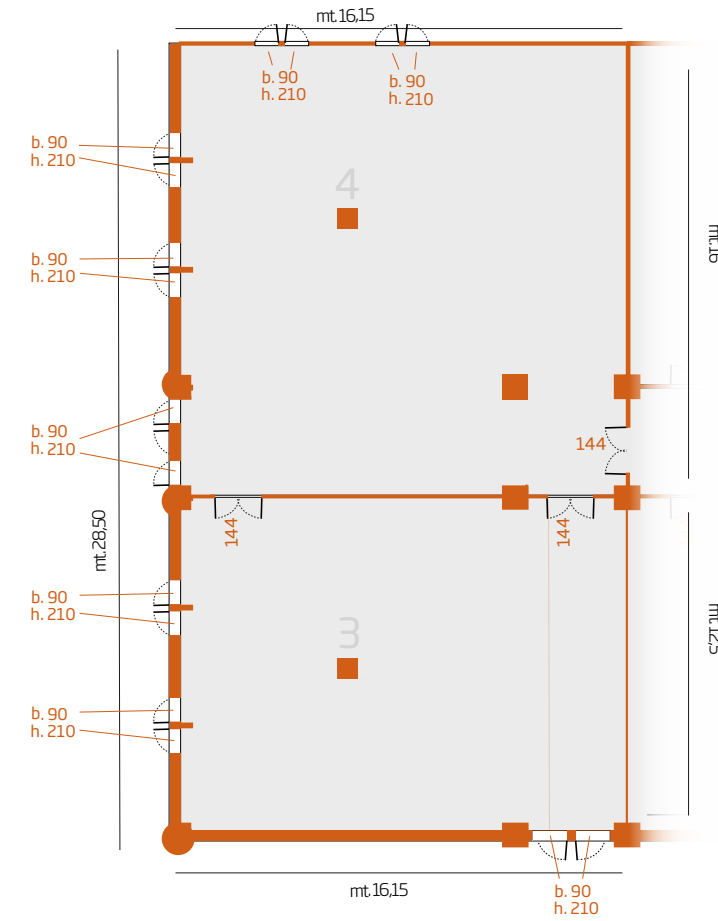
SALA PIRAMIDI - sala 2
Platea = **200**
Classroom = **120**
Cabaret = **70**
Ferro di Cavallo = **40**
Tavola Rotonda = **40**

SALA PIRAMIDI - sala 5
Platea = **200**
Classroom = **120**
Cabaret = **70**
Ferro di Cavallo = **40**
Tavola Rotonda = **40**

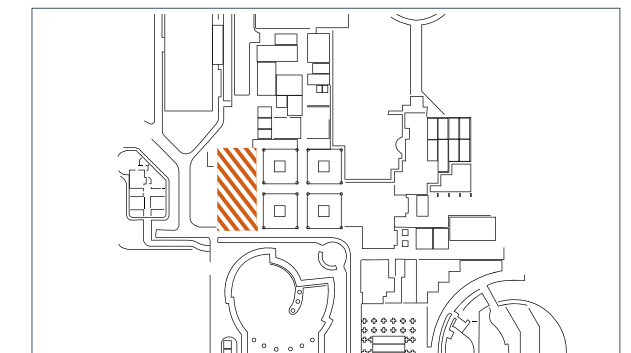
SALA PIRAMIDI 3-4

Metri quadri superficie = **470,25 mq**
Altezza media = **3,50 - 7,30 mt**

SALA PIRAMIDI 3-4
h media 350- 730 cm



Valentino Hotel



Sala Piramidi - 3-4 | piano terra

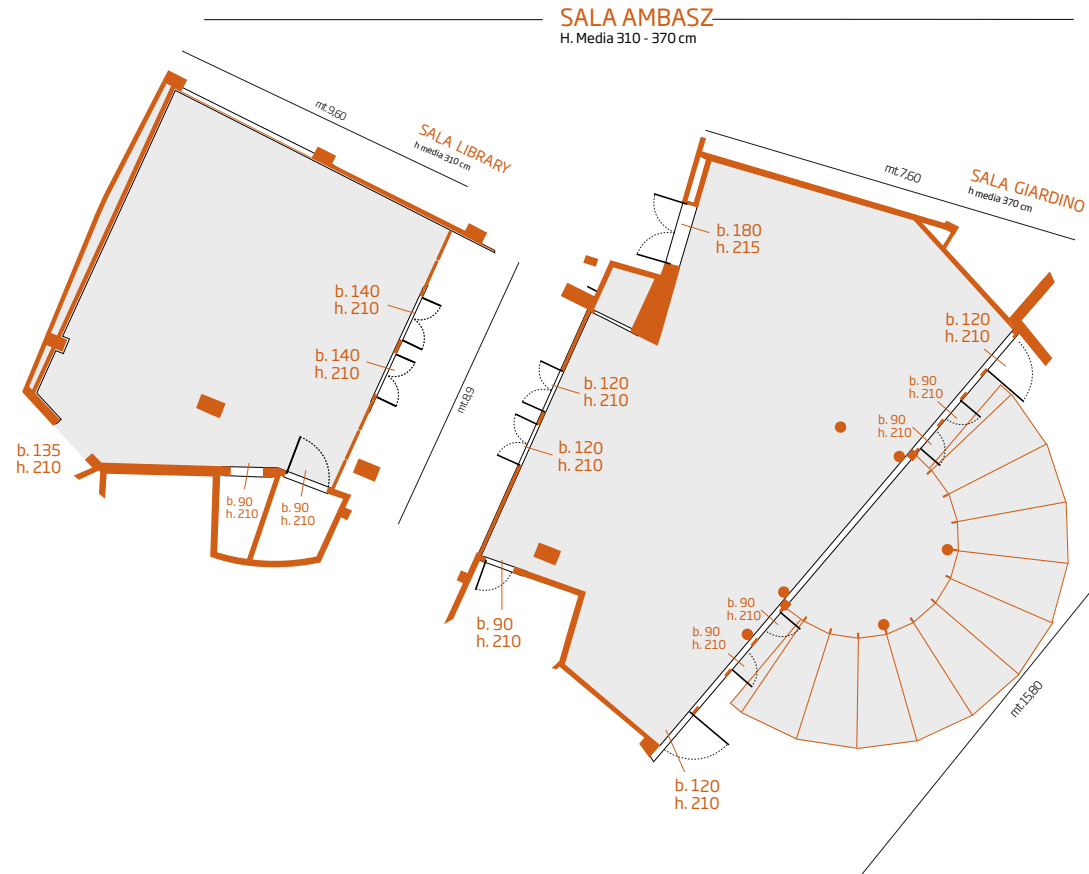
SALA PIRAMIDI - sala 3
Platea = **200**
Classroom = **120**
Cabaret = **70**
Ferro di Cavallo = **40**
Tavola Rotonda = **40**

SALA PIRAMIDI - sala 4
Platea = **300**
Classroom = **200**
Cabaret = **120**
Ferro di Cavallo = **40**
Tavola Rotonda = **40**

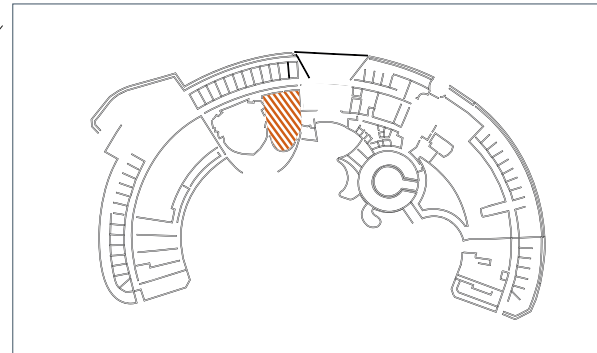
SALA AMBASZ (Sala Giardino + Sala Library)

Metri quadri superficie = **230 mq**
Altezza media = **3,10 - 3,70mt**

Platea = **130**
Classroom = **60**
Cabaret = **60**
Ferro di Cavallo = **50**



Kalidria Hotel

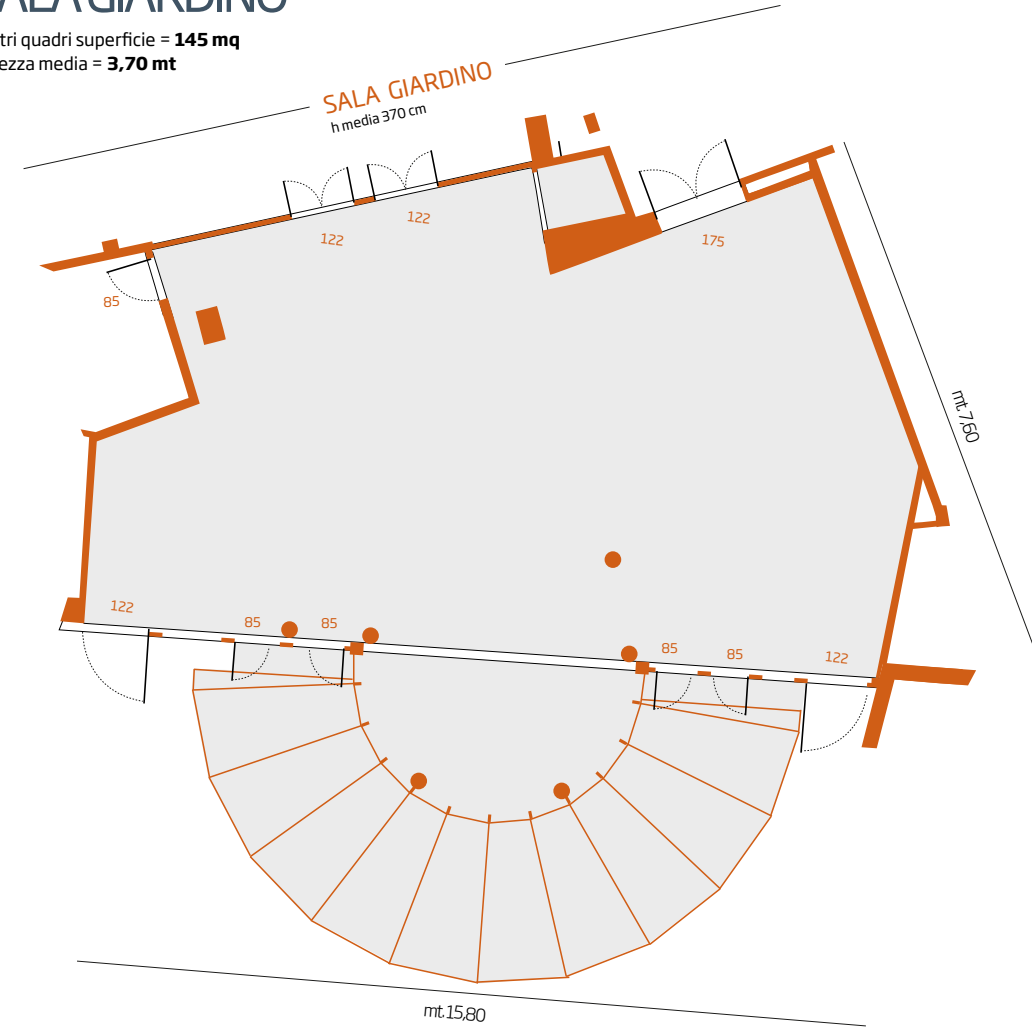


Sala Ambasz | piano terra

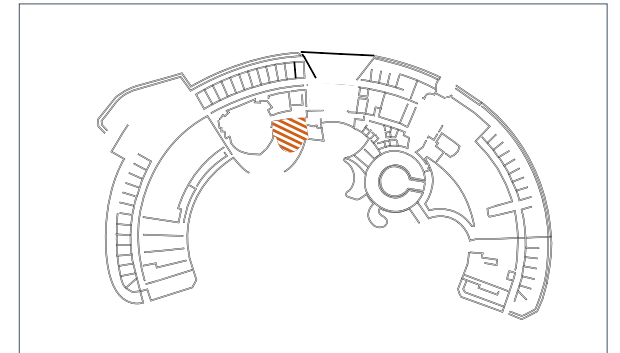
SALA GIARDINO

Metri quadri superficie = **145 mq**
Altezza media = **3,70 mt**

Platea = **70**
Classroom = **30**
Cabaret = **35**
Ferro di Cavallo = **30**



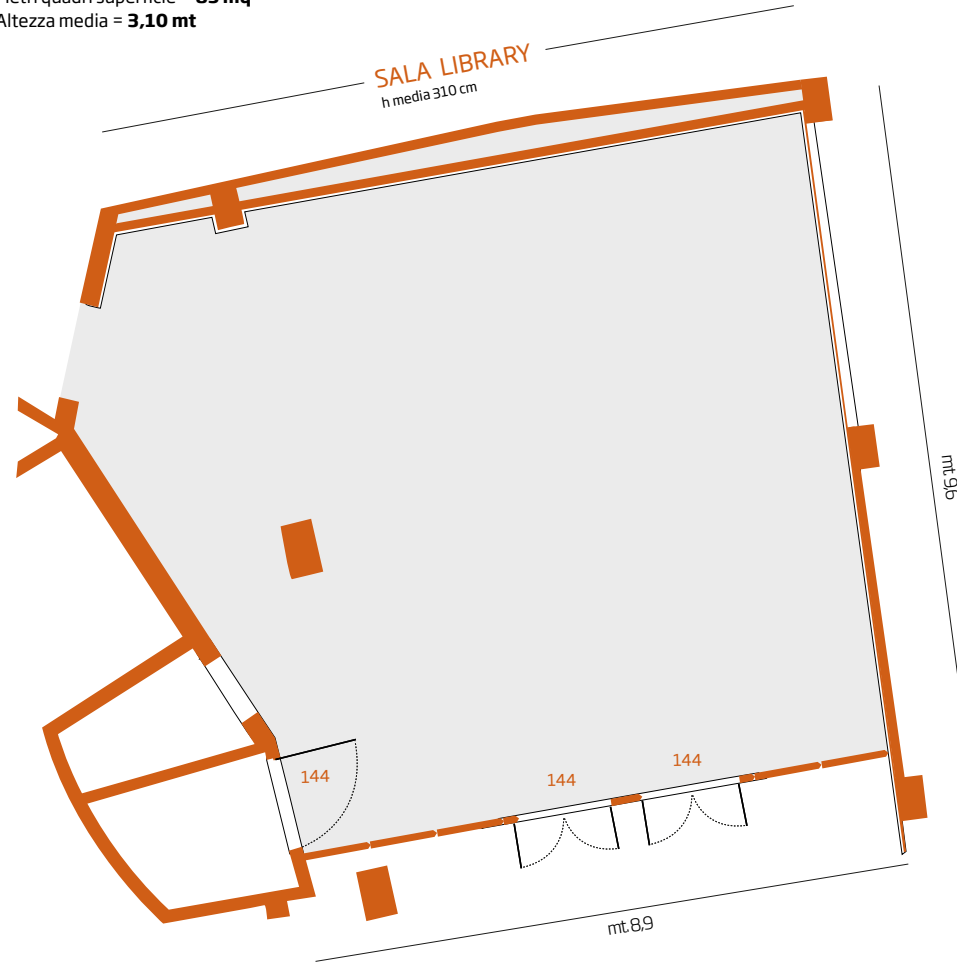
Kalidria Hotel



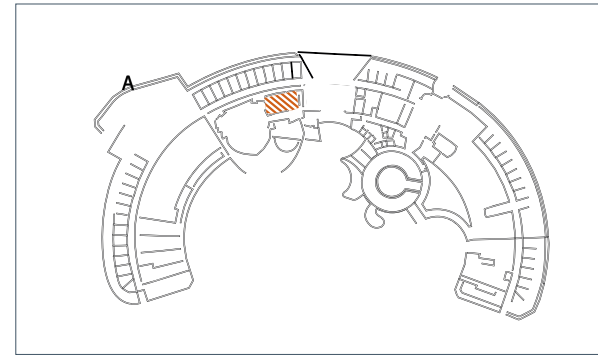
Sala Giardino | piano terra

SALA LIBRARY

Metri quadri superficie = **85 mq**
Altezza media = **3,10 mt**



Kalidria Hotel

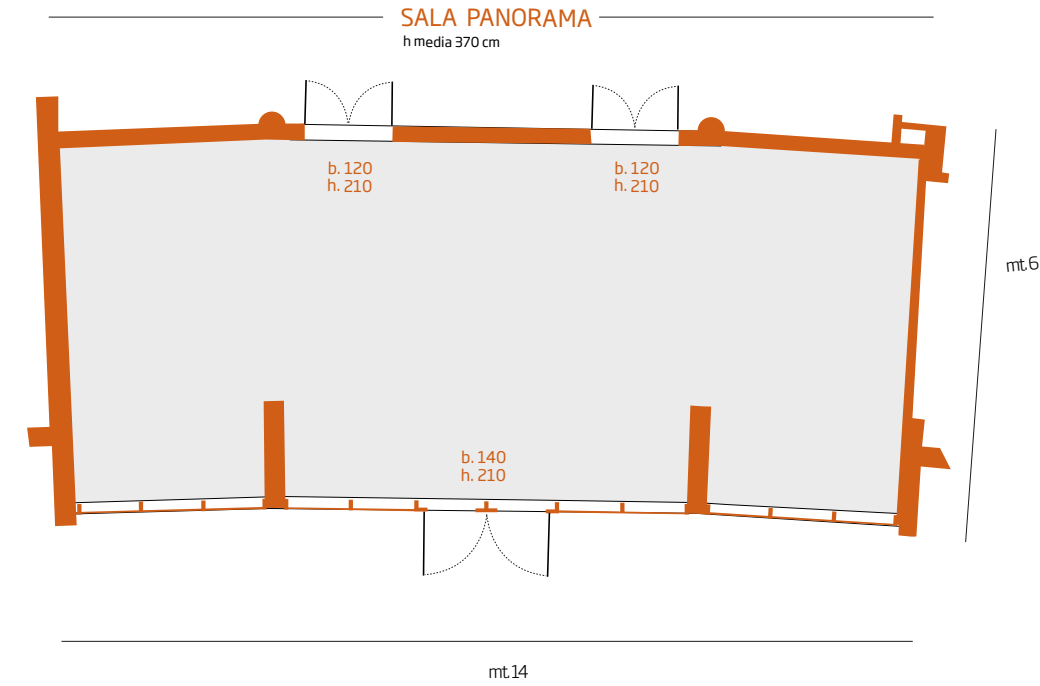


Sala Library | piano terra

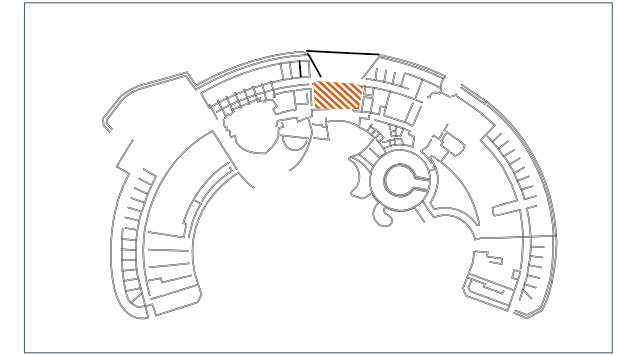
Platea = **60**
Classroom = **30**
Cabaret = **30**
Ferro di Cavallo = **22**

SALA PANORAMA

Metri quadri superficie = **84 mq**
Altezza media = **3,70 mt**



Kalidria Hotel



Sala Panorama | 1° piano

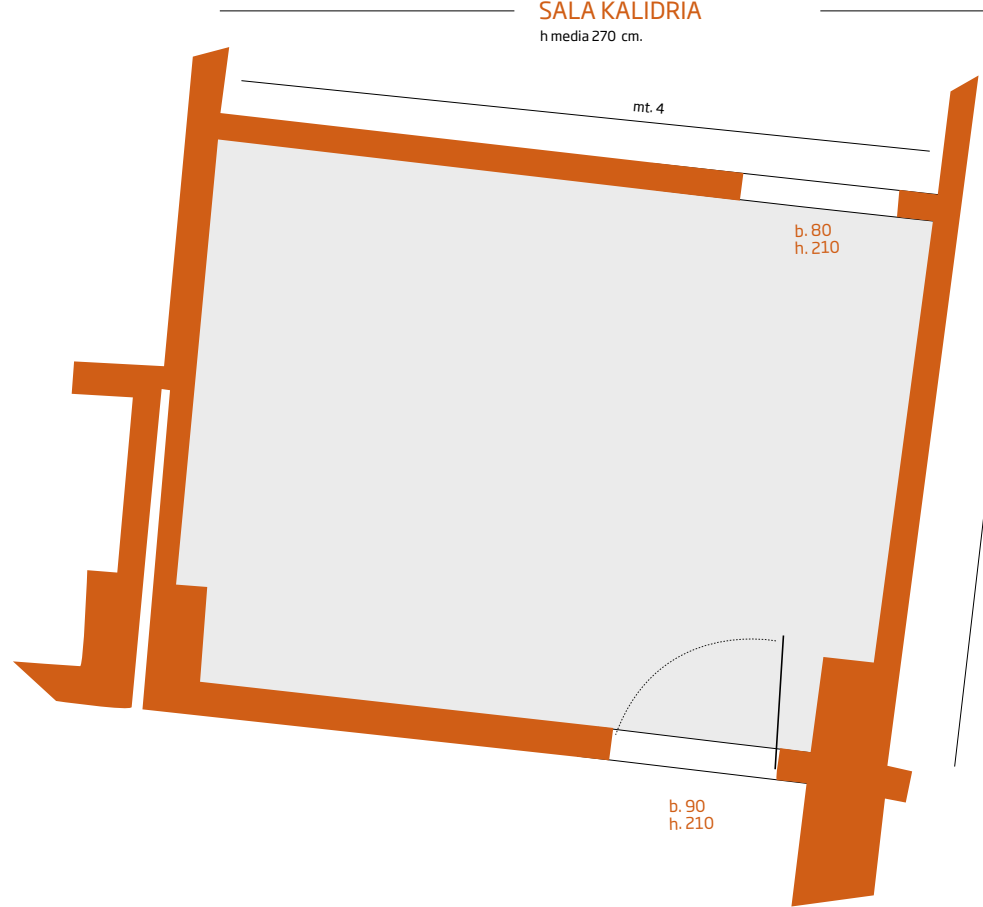
Platea = **45**
Classroom = **20**
Ferro di Cavallo = **24**
Tavola Rotonda = **24**

SALA KALIDRIA

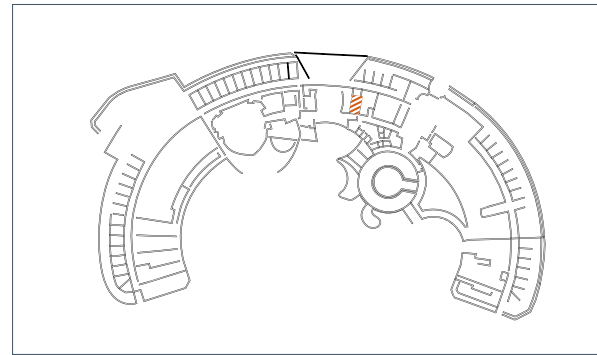
Metri quadri superficie = **11 mq**
Altezza media = **2,70 mt**

Tavola rotonda = **6**

SALA KALIDRIA
h media 270 cm.



Kalidria Hotel



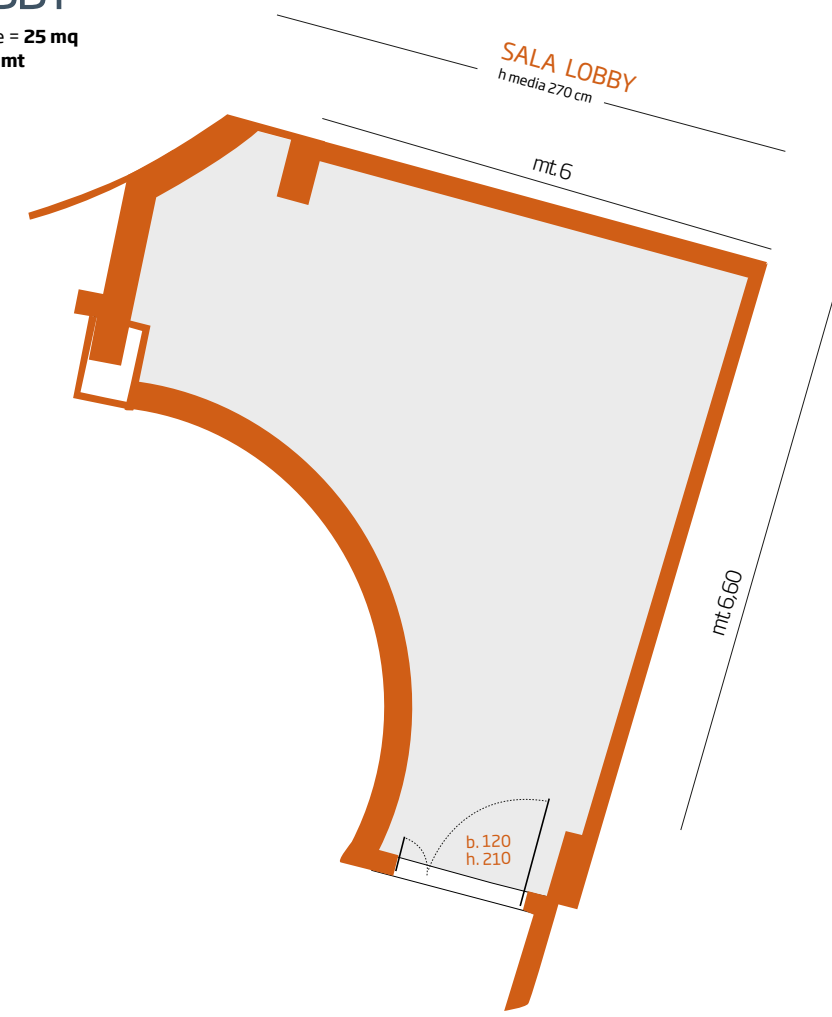
Sala Kalidria | piano terra

SALA LOBBY

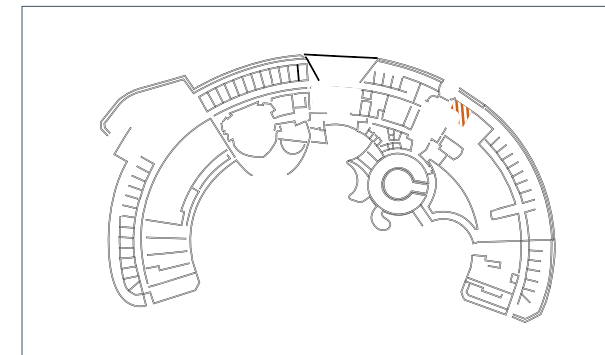
Metri quadri superficie = **25 mq**
Altezza media = **2,70 mt**

Platea = **10**
Classroom = **4**

SALA LOBBY
h media 270 cm



Kalidria Hotel



Sala Lobby | piano terra

ETHRA CONGRESS CENTER

S.S. 106 km 466.600 – Castellaneta Marina (Taranto) – Italy

Tel. +39.085.8369700 – mice@bluserena.it www.bluserena.it